

 **Built-in Video Recorder and WiFi Connection**

16 GB internal storage provides 24 hours of video recording capability, or approximately 20,000 images of photo storage. WiFi mode allows for up to 4 connections simultaneously.



Model	 TL 35
Detector Resolution	384×288
Pixel Pitch, μm	12
NETD, mK	≤40
Frame Rate, Hz	50
Objective Lens, mm	35
Field of View	7.5°×5.6°
Magnification, ×	3.0~12.0
Eye Relief, mm	70
Diopter Adjustment	-4D~+4D
Display Resolution	1280×960 LCOS
Battery	Built-in battery pack + replaceable 18500 battery
Battery Life, h	15
Weight (without batteries-18500), g	<930
Dimension, mm	385×85×75
Interface	Type-C
Detection Range, m (Target size: 1.7 m×0.5 m, P(n) = 99%)	1816



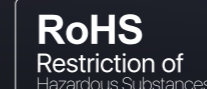
IRay Technology Co., Ltd.

Tel: 400-998-3088 Fax: +86-535-3410604
 Mail: infirayoutdoor@infiray.com Web: www.infirayoutdoor.com
 Add: 11th Guiyang Street, YEDA, Yantai 264006, P.R.China



Tube Series TL 35

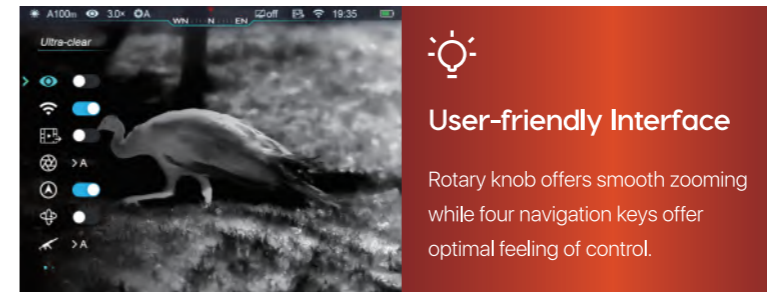
The Tube series is a cutting-edge thermal imaging riflescope, which has a similar appearance with the Day riflescope. The state-of-the-art design is especially for professional hunters who value traditions and seek technological superiority.





High Image Quality

The Tube Series is designed for faultless operation in extreme weather and temperature conditions. Whether or not the environment is freezing cold or blistering hot, the image retains its contrast and vivid colors without loss of frame rate.



User-friendly Interface

Rotary knob offers smooth zooming while four navigation keys offer optimal feeling of control.

High Shock Resistance

The Tube series features exceptionally high shock resistance up to 1000 G.



Reliable Full Aluminum Housing

The Tube series housing is made of aluminum and is designed to improve reliability.

Mounts on Standard 30 mm Scope Rings

Applicable for 30 mm diameter pipe, the newly designed tubular appearance allows the Tube series to be installed on standard 30 mm scope rings, with simple operation, high stability and reliability.

Sufficient Operation Time and Flexible Battery Choice

15h+

The working time of built-in battery is up to 13 hours, and the replaceable 18500 battery will provide an additional 2.5 hours of operation.

Extreme Detection Range

1800 m

It combines the advanced thermal imaging sensor and the high-quality germanium optical lens to provide an unprecedented detection range up to 1800 meters, even in complete darkness.

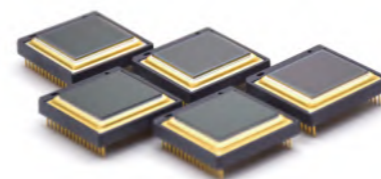
Picture-in-Picture Function

The Picture-in-Picture function improves accuracy by providing a 2x-magnified image of the reticle area at the top of the display. It helps to zoom in on a target while maintaining visibility of the entire field of view.



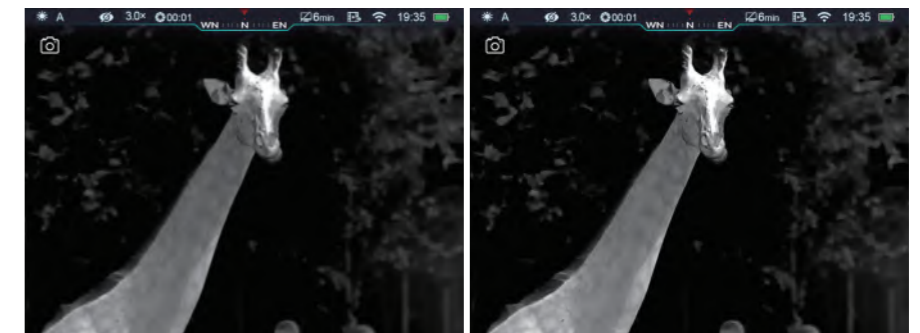
12 μm Pixel Pitch

The high-performance detector with the pixel pitch of 12 μm is embedded.



Ultraclear Mode

Built-in ultraclear mode is designed for bad weather conditions, such as heavy fog and rain. It will make the Tube series more sensitive and capable of providing more details.





Model



CTP 13

Microbolometer	
Detector Resolution	256×192
Pixel Size, μm	12
NETD, mk	≤ 40
Frame Rate, Hz	25
Optical Characteristics	
Objective Lens, mm	13
Filed of View	13.5°×10.1°
Eye Relief, mm	20
Exit Pupil Diameter, mm	15
Magnification	×1
Detection Range, m (Target size: 1.7 m×0.5 m, P(n) = 99%)	675
Display	
Type	OLED
Resolution	1024×768
Operational Characteristics	
Battery	CR123 (3.7 V) × 1
Power Consumption, mW	850
Max. Battery Life (t=24 °C), h	3.5
Degree of Protection, IP Code	IP67
Weight (without battery), g	≤ 140
Dimension, mm	77×52×46
Interface	Type-C
Adapter Ring Mount	M30×1.0

Clip T Series

CTP13

Clip T Series is one of the most compact and cheapest thermal imager attachment for sights on the market, which is mainly used with day riflescope and low cost, low power consumption and miniaturization.



InRay Technology Co., Ltd.

Tel: 400-998-3088

Fax: +86-535-3410604

Mail: infiRayoutdoor@infiRay.com

Web: www.infiRayoutdoor.com

Add: 11th Guiyang Street, YEDA, Yantai 264006, P.R.China



 **Compact Design and Ultra-light Weight.**

140 g

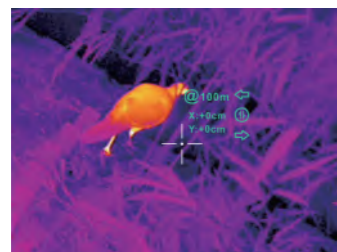
Compact size and ultra-light weight of 140g do not affect the balance and accuracy of the day scope.



 **No Rezeroing Required and Quick Attached**

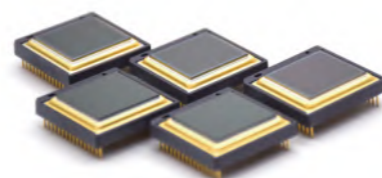
With the special calibration to the camera, no rezeroing is required after attaching to the day scope.


Clamp and Shoot, that's it.



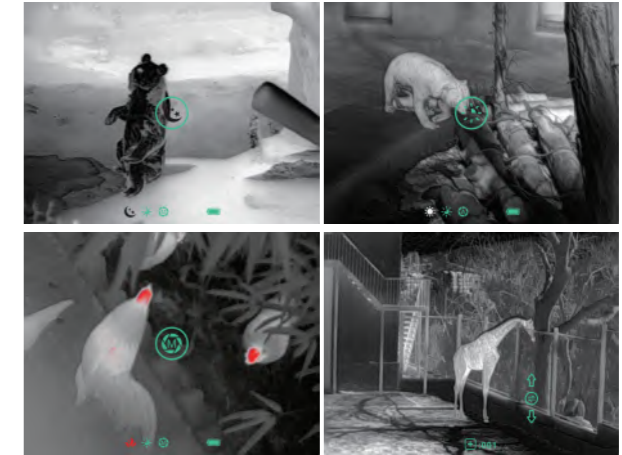
 **12 μ m Pixel Pitch**

The high-performance detector with the pixel pitch of 12 μ m is embedded.



 **The Interface is Easy to Operate and Functional.**

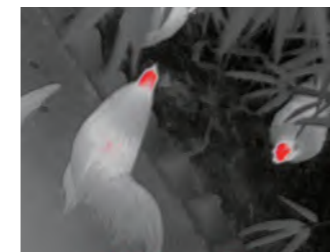
Support four image modes, screen brightness adjustment, shutter mode adjustment, and image calibration.



 **AMOLED Micro Display**

High contrast AMOLED micro display with HD resolution offers sharp image and vivid colors. Display ensures excellent image quality and flawless performance even in freezing temperatures.

 **High Image Quality**



The Clip T Series is designed for faultless operation in extreme weather and temperature conditions. Whether or not the environment is freezing cold or blistering hot, the image retains its contrast and vivid colors without loss of frame rate.



Various Battery Selection

With the state-of-the-art design, it also comes along with various choices of the battery, including **CR123(3.7V)** and **16650** with the adapter.

Model



CML25

Resolution, pixels	384×288
Pixel Size, μm	17
NETD, mK	≤40
Frame Rate, Hz	50
Objective Lens, mm	25
Field of View	14.9°×11.2°
Display, pixels	1024×768 OLED
Magnification, ×	1.0
Battery	CR123 (3.7V) / 16650
Max. Battery Life	CR123 (3.7V)-up to 1.5h 16650-up to 4h
Weight (without batteries), g	<290g
Dimension, mm	125×70×48
Mount	M30×1.0
Detection Range, m (Target size:1.7m×0.5m, P(n)=99%)	916



IRay Technology Co., Ltd.

Tel: 400-998-3088 Fax: +86-535-3410604
Mail: infirayoutdoor@infray.com Web: www.infrayoutdoor.com
Add: 11th Guiyang Street, YEDA, Yantai 264006, P.R.China



Clip M Series **CML25**

The thermal imaging camera Clip M Series is one of the most affordable Clip-on type cameras in the market. It is very compact and easy to use as an attachment together with day scopes. **NO REZEROING** is required when attaching to the day scope. It also can be used as a professional portable monocular. Small body but with powerful ability.





High Image Quality

The high performance IRay Vox detector and the advanced image processing create brilliant and sharp images.

No Rezeroing Required and Quick Attached

With the special calibration to the camera, no rezeroing is required after attaching to the day scope.

Clamp and Shoot, that's it.

Friendly Operation

All options can be switched by one button, which makes the operations easy and quick.



AMOLED Micro Display

High contrast AMOLED micro display with HD resolution offers sharp image and vivid colors. Display ensures excellent image quality and flawless performance even in freezing temperatures.



Compact Size and Lightweight

Compact size and lightweight design do not influence the balance of the rifle significantly.

Familiar Precision

Front-mounted allows consistent shooting position and eye relief with an existing day riflescope. Original design and precision technology ensure POI stability when attachment is in use. Users do not need to make any correction to position of day riflescope's reticle when mounting Clip camera.



Multiple Installation Interfaces

For simplify operation, Clip M Series has a mini-rail mounting points and two threaded holes designed for variety widely usage, so as to install additional equipment.

Built-in Accelerometer and Digital Compass

Built-in accelerometer and digital compass improves accuracy by precisely identifying cant and angles. The Clip M Series can indicate the direction and degree of lateral tilting.



Compass Msensor Bluetooth

Quick Transformation

M Series is a dual-use camera, since it can be used as a thermal monocular for searching or as an attachment of day riflescope for shooting with quick transformation.



Ultraclear Mode

Built-in Ultraclear mode designed for harsh environment. It will be more sensitive and get more details.



Built-in Accelerometer and Digital Compass

Built-in accelerometer and digital compass improve accuracy by precisely identifying cant and angles. The Clip C Series can indicate the direction and degree of lateral tilting.



Compass



Msensor

Model	 CL42
Resolution, pixels	384×288
Pixel Size, μm	17
NETD, mK	≤40
Frame Rate, Hz	50
Objective Lens, mm	42
Field of View	8.9°×6.7°
Magnification	Accessory:1×; Monocular:2.9×-11.6×
Diopter Adjustment	-5D ~ +5D
Display, pixels	1024×768 OLED
Battery	CR123×2
Max. Battery Life, h	4
Weight (without batteries), g	<420
Dimension, mm	154×61×58
Mount	M52×0.75
Detection Range, m (Target size:1.7m×0.5m, P(n)=99%)	1540



IRay Technology Co., Ltd.

Tel: 400-998-3088 Fax: +86-535-3410604
Mail: infirayoutdoor@infiray.com Web: www.infirayoutdoor.com
Add: 11th Guiyang Street, YEDA, Yantai 264006, P.R.China



Clip C Series **CL42**

The Clip C Series is designed as an attachment for any type of the standard day scope. **NO REZE-ROING** is needed just **CLAMP&SHOOT**. It is a dual-use camera since it can be switched into a professional monocular with the standard delivered eyepiece in few seconds. Now expanding your detection ability together with your day-scope.





High Image Quality

The high performance IRay VOx detector and the advanced image processing create brilliant and sharp images.

No Rezeroing Required and Quick Attached

With the special calibration to the camera, no rezeroing is required after attaching to the day scope.

Clamp and Shoot, that's it.

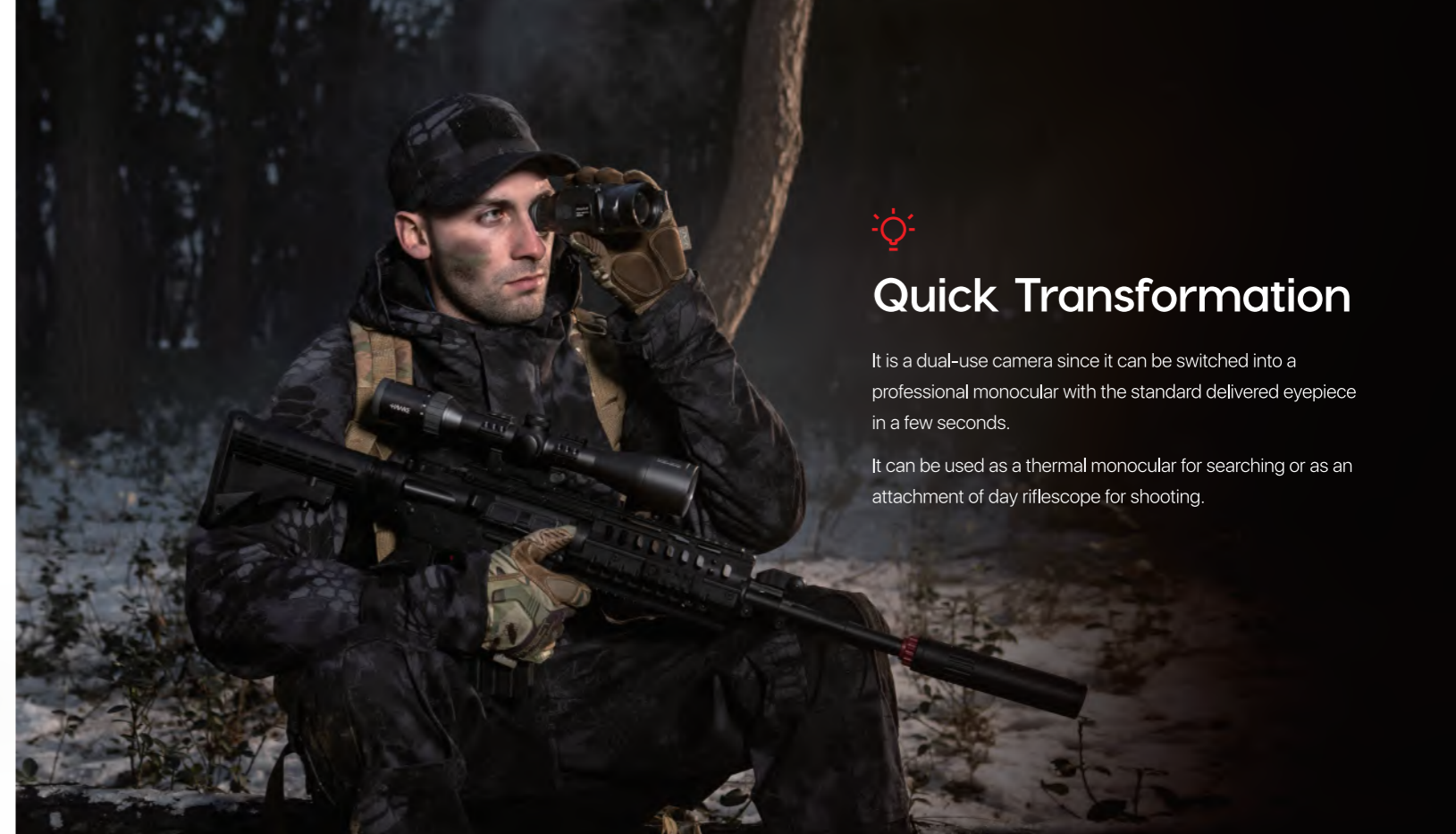
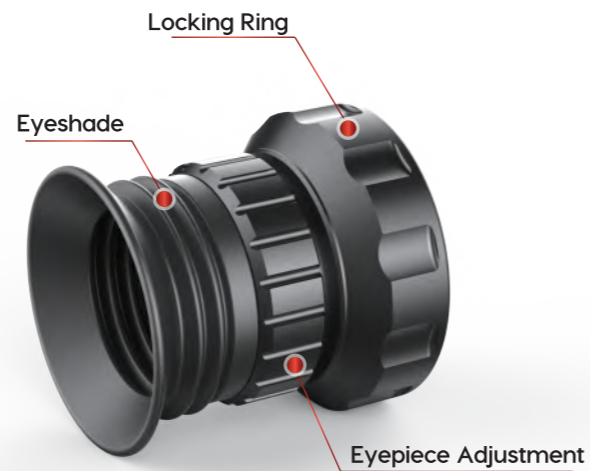
Compact Size and Lightweight

Compact size and lightweight design do not influence the balance of the rifle significantly.

Familiar Precision

Front-mounted allows consistent shooting position and eye relief with an existing day riflescope. Original design and precision technology ensure POI stability when attachment is in use. Users do not need to make any correction to position of day riflescope's reticle when mounting Clip C Series.

Monocular Eyepiece



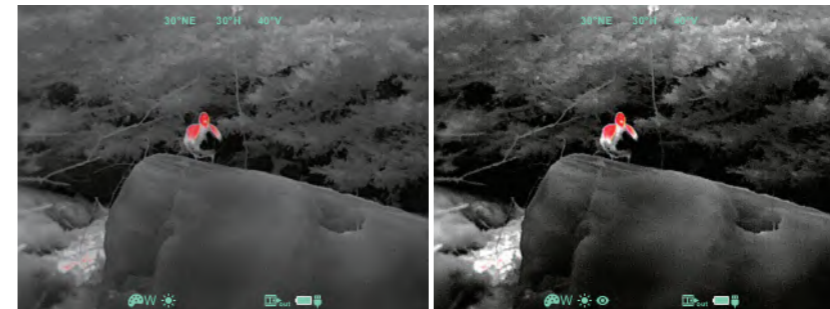
Quick Transformation

It is a dual-use camera since it can be switched into a professional monocular with the standard delivered eyepiece in a few seconds.

It can be used as a thermal monocular for searching or as an attachment of day riflescope for shooting.

Ultraclear Mode

Built-in Ultraclear mode designed for harsh environment. It will be more sensitive and get more details.



AMOLED Micro Display

High contrast AMOLED micro display with HD resolution offers sharp image and vivid colors. Display ensures excellent image quality and flawless performance even in freezing temperatures.



Wireless Remote Control

Wireless remote control can be fixed near trigger which allows basic operations to be fulfilled easily.



Built-in Accelerometer and Digital Compass


The built-in accelerometer and digital compass improves accuracy by precisely identifying cant and angles. It can indicate the direction and degree of lateral tilting.



Compass



Msensor

Model	 RL 42	 RH 50
Detector Resolution	384×288	640×512
Pixel Size, μm	12	
NETD, mK	≤40	
Frame Rate, Hz	50	
Eye Relief, mm	55	
Exit Pupil Diameter, mm	6	
Magnification, ×	4~16	2.8~11.2
Objective Lens	F42 / 1.1	F50 / 1.2
Display Resolution	1024×768 OLED	
Display Size, inch	0.39	
Laser Rangefinder	Optional	
Battery	3.7 V / 4400 mAh	
Max. Battery Life, h	6	
Degree of protection, IP code	IP67	
Weight (without batteries), g	830	840
Dimension, mm	250×65×58	250×61×58
Detection Range, m (Target size: 1.7 m×0.5 m, P(n) = 99%)	2179	2594



IRay Technology Co., Ltd.

Tel: 400-998-3088

Fax: +86-535-3410604

Mail: infirayoutdoor@infray.com

Web: www.infrayoutdoor.com

Add: 11th Guiyang Street, YEDA, Yantai 264006, P.R.China



Rico Series

The Rico series is a multifunctional and highly expandable infrared thermal imaging product. The product is featured with alterable **laser rangefinder**, detachable battery pack, eyepiece magnification up to 14 times, and comprehensive upgrade of software interface. With the updated, the Rico series also offers advanced image correction and automatic image optimization.

RL 42 / RH 50



High Image Quality

The Rico series is embedded with an infrared, independently developed high performance VOx detector, which offers you vivid, highly detailed thermal images. It is easier to search for targets in the dark with amazingly sharp image quality.

Expandable Laser Ranging Function

The Rico series offers laser ranging capabilities, which can accurately capture and display the target distance with an accuracy of ± 1 m and a maximum distance of 1000 m. There are two ranging modes: single and continuous. Continuous ranging mode can be quickly activated to accommodate changing distances.

12 μ m Thermal Imaging Sensor

High performance 12 μ m pixel pitch detectors are embedded.

Ultraclear Mode

The built-in ultraclear mode is especially designed for harsh weather conditions, such as in heavy fog and rain. It will be more sensitive and display more details.

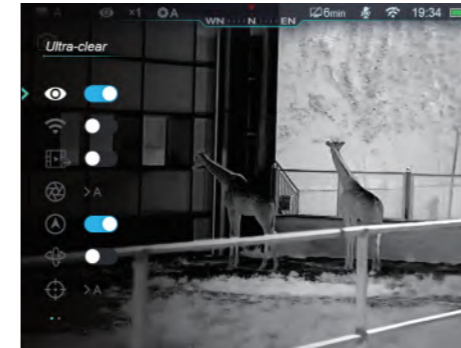


IP67 Fully Waterproof

It is waterproof, dust-proof and the device can perform amazingly even in extremely harsh environments such as heavy rain and snow.

High Shock Resistance

The Rico series features exceptionally high shock resistance up to 1000 G.



User-Friendly Interface

Simple and easy to operate is the initial design intention of the Rico series. The vivid icon design offers a visualized guide and translucent background of the menu display, ensuring the user to observe the target unobstructed.



AMOLED Micro Display

The high contrast AMOLED micro display with HD resolution offers sharp image and vivid colors. The display screen has excellent image quality and gives a flawless performance, even in freezing temperature.



Replaceable Battery Pack

The Rico series support a 3.7 V, 3600 mAh large capacity battery pack that operates for 6 hours. With the ability to maintain continuous power supply at any time outdoors, it provides an ideal battery solution. The batteries can be quickly removed and replaced with new ones in a matter of seconds.



Picture-in-Picture

The Picture-in-Picture function improves accuracy by providing a 2 x-magnified image of the reticle area, at the top of the display. It helps to magnify the target while maintaining visibility of the entire field of view.

Video Recording

The Rico series offer video record and image capture during observation. The video and photo can be easily transmitted via wired or WiFi connection.



Photo



Video



WiFi



Model	SCP19	SCL35	SCT35
Resolution, pixels	256×192	384×288	
Pixel Size, μm	12	17	12
NETD, mK	≤40		
Frame Rate, Hz	25	50	
Objective Lens, mm	19	35	
Field of View	9.2°×6.9°	10.7°×8°	7.5°×5.7°
Diopter Adjustment	-5D ~ +5D		
Display, pixels	1280×960 LCOS		
Magnification, ×	2.33-4.66	2.02-8.08	2.86-11.44
Wifi & Recorder	×	×	✓
Compass & Msensor	✓	×	✓
Battery	CR123×2		
Max. Battery Life, h	8	4	3.5
Detection Range, m (Target size:1.7m×0.5m, P(n)=99%)	986	1283	1818



Saim Series

The cutting-edge design of the Saim series thermal imaging scope makes it a totally outstanding performer. Ergonomic design and excellent imaging quality make the Saim series an excellent companion for night observation, even in condition of rainy or foggy.

SCP19 / SCL35 / SCT35



InfiRay Technology Co., Ltd.

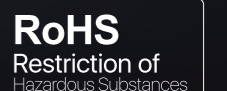
Tel: 400-998-3088

Fax: +86-535-3410604

Mail: infiRayoutdoor@infiRay.com

Web: www.infiRayoutdoor.com

Add: 11th Guiyang Street, YEDA, Yantai 264006, P.R.China



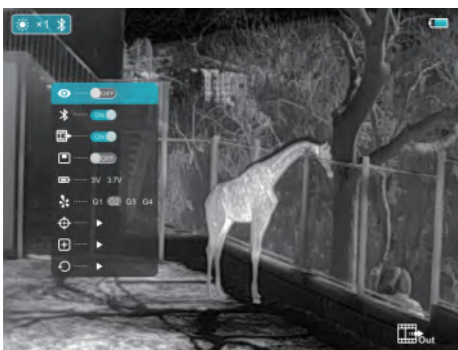


High Image Quality

Built-in IRay detector and matched with Matrix III™ powerful algorithm, the Saim series provides high image quality, improving the image contrast automatically, strengthening the image hierarchy, so as to find target faster.

Ultraclear Mode

Ultraclear mode is specially for harsh environment, that make Saim be more sensitive and get more details.



User-Friendly Interface

Simple and easy to operate is the initial design intention of the Saim series. Full icon design, easy to understand, and translucent background design of menu can effectively avoid occlusion vision.

Built-in Video recorder and WIFI connection

SCT35 is built with memory of 16GB which can support to store about 20,000 pictures. The wifi hotspot of the product supports simultaneous connection of four devices.

High Shock Resistance

The Saim Series features exceptionally high shock resistance up to 1000G.

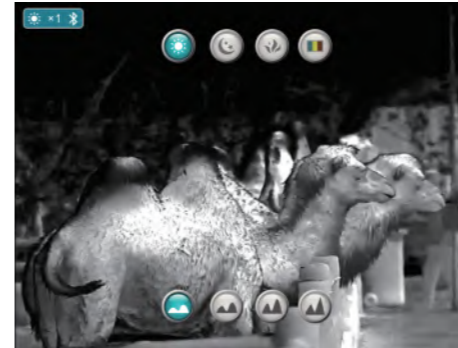
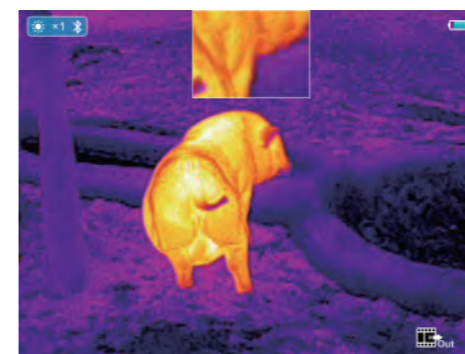
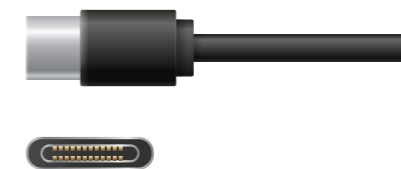


Image Sharpness Adjustment

Image sharpness can be adjusted manually to fit individual preferences for high quality image, and there are four levels for option by short pressing menu key.

External Power Supply

The working time can be significantly prolonged by connecting with high capacity external power supply units, i.e. portable power source via Type-C cable presented in the package.



Picture-in-Picture Function SCL35 / SCT35

Picture-in-Picture improves accuracy by providing a 2x magnified image of the reticle area at the top of the display. It helps to magnify the target while retaining the rest of the field of view visible.

Compact Size and Lightweight

With reasonable layout, compact structure and light weight, the Saim series is more comfortable and convenient for outdoor usage.

Built-in Accelerometer and Digital Compass (SCP19 /SCT35)

Built-in accelerometer and digital compass improve accuracy by precisely identifying cant and angles. The Clip C Series can indicate the direction and degree of lateral tilting.



Compass



Msensor



 **High Image Quality**

The Eye series is embedded with IRay independently developed high performance VOx detector which allows you to get high detailed thermal images, so as to make it simpler to search targets in darkness.

Model			
	E2n	E3n	E6n
Detector Resolution, pixels	240×180	384×288	640×512
Pixel Size, μm	17		12
NETD, mK	≤40		
Frame Rate, Hz	50		
Objective Lens, mm	13	19	25
Field of View	17.8°×13.4°	19.5°×14.7°	17.5°×14°
Display Resolution, pixels	720×540		
Magnification, ×	0.93-1.86	0.85-3.4	0.95-3.8
Max. Battery Life, h	15		12
Dimension, mm	160×62×62		185×62×62
Weight, g	<320		<400
Detection Range, m (Target size:1.7m×0.5m, P(n)=99%)	476	696	1298



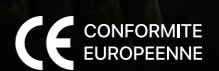
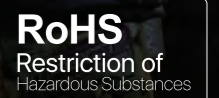
IRay Technology Co., Ltd.

Tel: 400-998-3088 Fax: +86-535-3410604
 Mail: infirayoutdoor@infray.com Web: www.infirayoutdoor.com
 Add: 11th Guiyang Street, YEDA, Yantai 264006, P.R.China



Eye Series

The compact & elegant design and easy operational functions make the Eye series thermal imaging monocular the ideal target observation tool in darkness.



E2N / E3N / E6N





1500m

1300m

1100m

900m

700m

500m

300m



Long Detection Range

An average human-size target can be detected at a 1300m distance in complete darkness.



Compact Size and Lightweight

Compact size and lightweight are important for outdoor usage, which requires the highest level of comfort and usability.



Sufficient Operation Time

15h

Up to 15 hours operational battery life guarantees you don't have to worry about the power supply.



Quick Start-Up Time

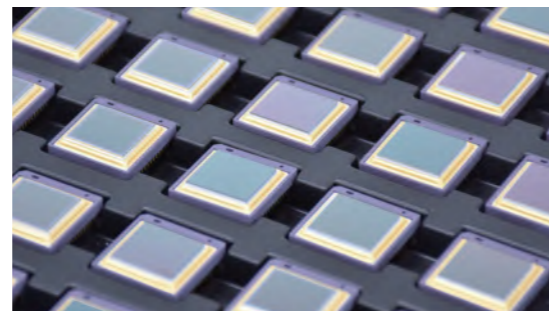
3s

3 seconds start-up time helps to save energy. The monocular can be kept in a pocket and then rapidly activated when the right time comes.



12μm

Thermal Imaging Sensor



E2n/E3n -17μm detector E6n -12μm detector

High performance 12μm & 17μm pixel pitch detectors are embedded in the compact body.



5

Color Palettes

The Eye series provides more than 5 color palettes for true colorized temperature mapping, including "white hot" "black hot" "red hot" "color" and "hot target highlight". Switching between different color palettes is fast and easy.



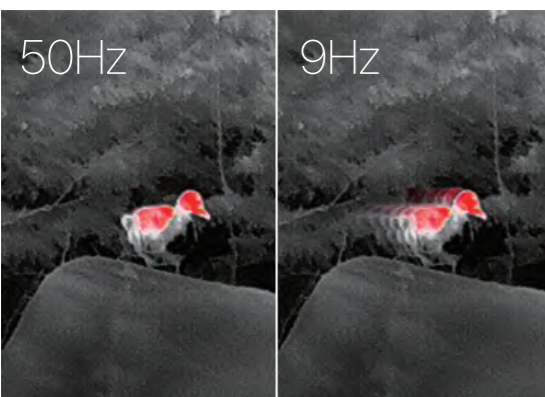
white hot

black hot

red hot

color

hot target highlight



High Frame Rate

50Hz

The 50Hz frame rate guarantees you to capture every moment that you want to catch. Smooth, fluent and crystal clear views offers excellent observation for all your outdoor adventures.

5 Color Palettes

The Eye II series provides more than 5 color palettes for true colorized temperature mapping, including "white hot" "black hot" "red hot" "color" and "hot target highlight". Switching between different color palettes is fast and easy.



Model				
Detector Resolution, pixels	384×288		640×512	
Pixel Size, μm	12			
NETD, mK	≤40			
Frame Rate, Hz	50			
Objective Lens, mm	25	35		50
Field of View	10.5°×7.9°	7.5°×5.7°	12.5°×10.0°	8.8°×7.0°
Display Resolution, pixels	1280×960 LCOS			
Magnification, ×	2.5-10	3.5-14.0	2.1-8.4	3.0-12.0
Max. Battery Life, h (Power saving mode)	7		6	
Dimension, mm	181×65×64	186×65×64	188×65×64	202×65×64
Weight, g	<450			<520
Detection Range, m (Target size:1.7m×0.5m, P(n)=99%)	1298	1818		2597

Eye II Series v2.0

12μm detector, lower power consumption and multifunctional operations enhance and record the excellent moment of your outdoor activities.

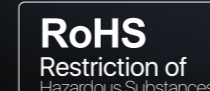
Lighter and longer.

E3PLUS V2.0 / E3MAX V2.0 / E6+ V2.0 / E6PRO V2.0



IRay Technology Co., Ltd.

Tel: 400-998-3088 Fax: +86-535-3410604
 Mail: infirayoutdoor@infiRay.com Web: www.infiRayoutdoor.com
 Add: 11th Guiyang Street, YEDA, Yantai 264006, P.R.China





High Image Quality

MATRIX III

The Eye II series is embedded with IRay independently developed high performance VOx detector which allows you to get high detailed thermal images, it will be much simpler to search targets in darkness. The Eye II series has excellent performance in critical temperature range. Matched with Matrix III™ powerful algorithm, it can improve the image contrast automatically, highlight the target and strengthen the image hierarchy, that makes outstanding and sharp image effect.



HD Micro Display

1280x960 high resolution internal display offers crisp image and vivid colors.

Pocket-Sized Thermal Vision Monocular

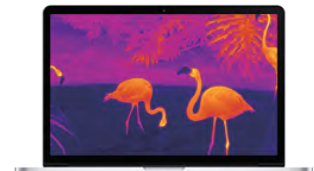
The InfiRay Eye II series is a pocket-sized thermal vision monocular for exploring the outdoors- at night and in low-light conditions. Eye II reveals your surroundings and helps you see people, objects and animals over one thousand meters away. Simple to use, with still image and video recording, Eye II is the perfect companion, whether in the back country or your own backyard.

Components controls



Built-in Video Recorder and WiFi Connection

The monocular has 8GB build-in memory to store the captured images and video recording and WiFi module which allows 4 connections simultaneously.



iOS

Android

Pad

Laptop

High Image Frequency

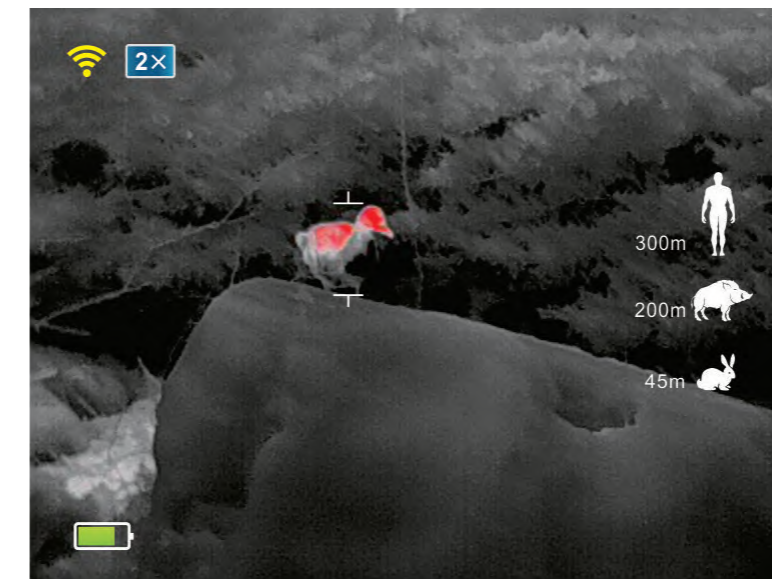
50Hz

The 50Hz frame rate guarantees you to capture every moment that you want to catch.



12μm Thermal Imaging Sensor

When using the same lens, 12μm has a longer detection distance than 17μm.



Stadiametric Rangefinder

Based on estimated heights of targets, users can get the rough distance from the target with the build-in stadiametric rangefinder fast and easy.

12x Magnification

Up to 12-time magnification to identify the target easier.

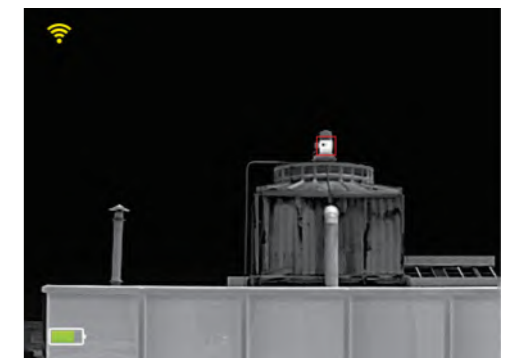
Picture-in-Picture Function

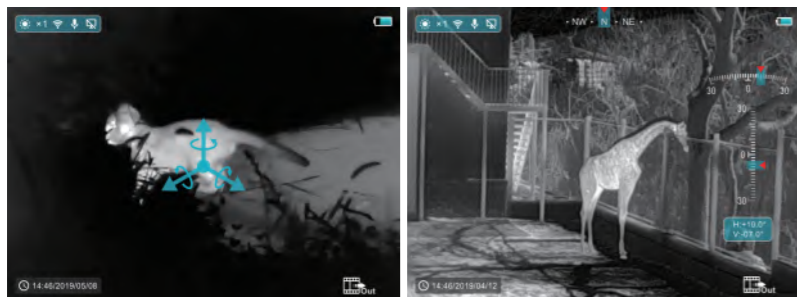


Picture-in-Picture improves accuracy by providing a 2x magnified image of the reticle area at the top of the display. It helps to zoom in on a target while retaining the rest of the field of view visible.

Hot Target Tracking

Tracking the hottest spot in the scene automatically and discovering the target quickly.







Built-in Accelerometer and Digital Compass

Built-in accelerometer and digital compass improves accuracy by precisely identifying cant and angles.



Compass Msensor

Model	 FL 25R	 FH 25R
Detector Resolution	384×288	640×512
Pixel Size, μm	12	
NETD, mK	≤40	
Frame Rate, Hz	50	
Objective Lens, mm	25	
Field of View	10.5°×7.9°	17.5°×14.0°
Display Resolution	1280×960 LCOS	
Laser Rangefinder Range, m	Max 600±1	
WiFi	✓	
Recorder, G	16	
Compass & Msensor	✓	
E-zoom	×1 ×2 ×3 ×4	
Max. Battery Life, h	6	
Dimension, mm	70×52×130	
Weight, g	320	
Detection Range, m (Target size: 1.7 m×0.5 m, P(n) = 99%)	1298	



Finder Series

The Finder series products are light and easy to carry, especially suitable for one-handed operation that can be put in a pocket anytime and anywhere. The compact design makes the Finder the best choice for outdoor investigation.



IRay Technology Co., Ltd.

Tel: 400-998-3088 Fax: +86-535-3410604
 Mail: infirayoutdoor@infiRay.com Web: www.infiRayoutdoor.com
 Add: 11th Guiyang Street, YEDA, Yantai 264006, P.R.China

FL 25R / FH 25R





IP66

Waterproof Rated

IP66 waterproof rating is used for protection from heavy rainfall, snow or other situations.



High Image Quality

The advanced image processing ability of the InfiRay detector, which has high performance electronics and optimized infrared optics, creates excellent image clarity and provides better detection and classification, both in day and night.



12 μ m Thermal Imaging Sensor

High performance 12 μ m pixel pitch detectors are embedded.

Long Detection Range

1298 m

The powerful objective lens combined with a 12 μ m professional grade thermal imaging sensor provides exceptional detection capabilities.

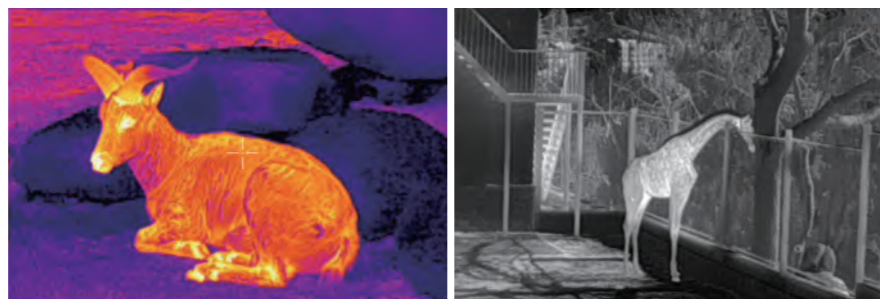
High Image Frequency

50 Hz

The 50 Hz refresh rate guarantees that you will capture every moment that you are interested in.

HD Micro Display

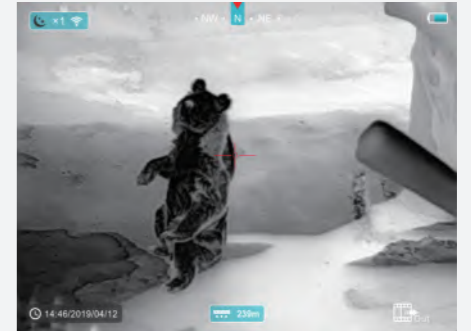
1280x960 high-resolution internal display offers sharp image and vivid colors.



Integrated Laser Rangefinder

600 m

The Finder series has a built-in laser ranging module, which helps to quickly and accurately capture and display the target distance. The ranging accuracy is ± 1 m and the maximum ranging distance is 600 m. It provides both single ranging and continuous ranging modes. Continuous ranging can be quickly activated to adapt to the constantly changing distance of the observed object.

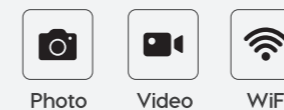


Pocket Machine

The compact size and light weight makes it easy to carry and operate with one hand. It can be put into the pocket anytime and anywhere. The Finder weighs only 320 g, which is lighter than conventional rangefinders, but much more powerful.

Built-in Video Recorder and WiFi Connection

16 GB internal storage provides 24 hours of video recording capability, or approximately 20,000 images of photo storage. WiFi mode allows for up to 4 connections simultaneously.



Infrared Sensor Switch

By sensing the reflection, the infrared sensor switch control the display on and off automatically which saves energy and extends the device's operation time. It also has the advantage of high sensitivity, strong anti-interference ability and stable working performance.



Hot Target Tracking

High / low temperature spot tracking are supported at three points (high / low and central) of temperature measurements.

Model	 DL 13
Resolution	384×288
Pixel Size, μm	17
NETD, mK	≤60 @25 C ,F#1.0
MRTD, mK	≤500 @25 C ,F#1.0
Frame Rate, Hz	25
Objective Lens, mm	13
Field of View	23.6°×20.7°
Magnification, ×	0.85~3.4
Battery	CR123 (3.7V)
Weight (without batteries), g	89
Dimension, mm	77×56×36
Power Consumption, mW	800±100
Interface	Type-C



DV Series DL13

The DV series can be used as a monocular thermal imaging scope or as an attachment to a mobile phone. When connecting to a phone, it can be used as a tool for real-time temperature measurement. With small size and weight of 89 g, the device is easy to be put in a pocket. **It is small, but much powerful.**



InfiRay Technology Co., Ltd.

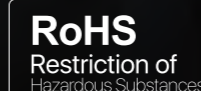
Tel: 400-998-3088

Fax: +86-535-3410604

Mail: infirayoutdoor@infiRay.com

Web: www.infiRayoutdoor.com

Add: 11th Guiyang Street, YEDA, Yantai 264006, P.R.China





More Choice, More Fun

Monocular for hunting, tool for temperature measuring, thermal recording for sharing. Easy as a toy, take it and find more fun.

High Image Quality

Embedded with InfiRay, an outstanding 384x288 / 17 μm VOx detector, the DV series provides superb images and makes searching target much easier in the darkness.



Remarkably Small and Portable

89 g

Weighing only 89 g , it's remarkably compact in size, and portable. Leave it in your pocket and you can have thermal viewing anywhere.

Powerful APP

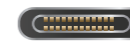
The APP supports thermal imaging video recording and shooting, offering real-time display of full-frame temperature measurement analysis and support for three areas of point-line-surface temperature measurements.



High Frame Rate

25 Hz

25 Hz frame rate output is capable of capturing every wonderful moment during night viewing.



Excellent Plug Design

Just push the cover, the plug will pop out automatically.

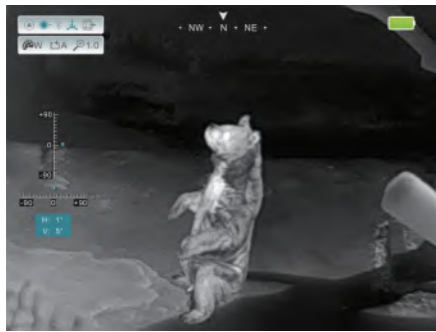
Low Power Consumption

4 h

With low power consumption design, it can operate for over 4 hours using one CR123 battery. Also it can be connected to a phone to extend its power supply.

Real-time Temperature Measurement Mode

The DV thermal imaging scope is designed to deliver flawless performance at an extreme temperature range of -20 C ~ 120 C . Under wide dynamic temperature measurement mode, the temperature measurement range is 120 C ~ 400 C .



Inclinometer and Digital Compass

Great situational awareness with integrated object orientation.



Compass



Msensor



Bluetooth

Model	 ML19	 MH25
Resolution, pixels	384×288	640×512
Pixel Size, μm	17	12
NETD, mK	≤40	
Frame Rate, Hz	50	
Objective Lens, mm	19	25
Field of View	19.5°×14.7°	17.5°×14°
Eye relief, mm	15	
Eye Pupil Diameter, mm	5	
Diopter Adjustment	-4D ~ +5D	
Magnification, ×	1.0-4.0	1.0-8.0
Display, pixels	1280×960 LCOS	
Battery	CR123(3.7V) / 16650	
Max. Battery Life	CR123 (3.7V)-up to 1.5h 16650-up to 3.5h	CR123 (3.7V)-up to 1.5h 16650-up to 3h
Weight (without batteries), g	<245g	<285g
Dimension, mm	121×70×45	128×70×45
Detection Range, m (Target size:1.7m×0.5m, P(n)=99%)	696	1298

Mini Series ML19 / MH25

The Mini Series is one of the smallest, fully multi-functional thermal imaging monocular currently on the market. Its remarkably compact size ensures that it can be concealed in a shirt pocket or mounted to a helmet with its Mini rail feature.



IRay Technology Co., Ltd.

Tel: 400-998-3088

Fax: +86-535-3410604

Mail: infirayoutdoor@infray.com

Web: www.infrayoutdoor.com

Add: 11th Guiyang Street, YEDA, Yantai 264006, P.R.China





High Image Quality

The advanced image processing of the IRay detector, which has high performance electronics and optimized infrared optics create excellent image clarity and provide better detection and classification, day and night.



HD

HD Micro Display

1280x960 high resolution internal display offers sharp image and vivid colors.



12μm Thermal Imaging Sensor

ML19 -17μm detector
MH25 -12μm detector



High performance 12μm & 17μm pixel Pitch detectors are embedded in the compact body.



High Image Frequency

50Hz

The 50Hz refresh rate guarantees you to capture every moment that you are interested.

Flexible Mounting Options

For hands-free operation, Mini has multiple mounting points designed to allow for a wide variety of head mounts, helmet mounts, and to install additional equipment. What is more, the image flipped automatically ensures the right image by different mounts.

Friendly Operation

All options can be switched by one button, which makes the operations easy and quick.



Stadiametric Rangefinder

Based on estimated heights of targets, users can get the rough distance from the target with the build-in stadiametric rangefinder fast and easy.



Various Battery Selection

With the state-of-the-art design, it also comes along with various choices of the battery, including CR123(3.7V) and 16650 with the adapter.



Wireless Remote Control

Wireless remote control makes the Mini more convenient when being mounted on a helmet.



Picture-in-Picture Function

Picture-in-Picture improves accuracy by providing a 2x magnified image of the reticle area at the top of the display. It helps to magnify the target while retaining the rest of picture visible.





Handle Battery

> 8h

The Holo handle can be powered by a single 18650 battery. For example, the 2000mAh battery capacity can be used to supply a minimum of 8h to the unit.

Model	 HP06	 HL13
Resolution, pixels	240×210	320×280
Pixel Size, μm	17	
NETD, mK	≤40	
Frame Rate, Hz	25	
Objective Lens, mm	6.8	13
Field of View	33.4°×29.4°	23.6°×20.7°
Display, pixels	1.63" AMOLED	
E-zoom	×1 \ ×2 \ ×3 \ ×4	
Reticle	Multiple Patterns and Color Options	
Battery / Max. Battery Life, h	CR123(3.7V)/3.5h	
Handle Battery / Battery Life, h	18650 / 8h	
IP Rating	IP67	
Weight (without battery), g	<250	
Dimension, mm	58.5×80.5×74.5	
Mount	Picatinny	
Detection Range, m (Target size:1.7m×0.5m, P(n)=99%)	249	476



IRay Technology Co., Ltd.

Tel: 400-998-3088

Fax: +86-535-3410604

Mail: infirayoutdoor@infray.com

Web: www.infrayoutdoor.com

Add: 11th Guiyang Street, YEDA, Yantai 264006, P.R.China



Holo Series HP06/HL13

Holo is a direct view multifunctional thermal reflex sight embedded with the IRay's latest generation thermal imaging detector. The **1.63" OLED display** brings excellent visual experience of quick target acquisition without visual difference. It can be the ideal option for those users who want thermal aiming camera with compact size, easy operation and multiple installation interfaces (side **picatinny** available).





High Image Quality

The high performance IRay VOx detector and the advanced image processing create brilliant and sharp images.



1.63" AMOLED Display

Holo series is designed for directly aiming with a 1.63" AMOLED display, that user can observe and aim fast and accurately using both eyes. It's more comfortable and clearer to observe the targets yet without visual difference.

Compact Size and Lightweight

With reasonable layout, compact structure, user-friendly controls, ergonomic design and light weight ensure the Holo Series more comfortable and convenient for outdoor usage.

Friendly Operation

All function can be controlled by a five-direction button, which makes the operations easy and quick.



Multiple Mounts for Easy Clamping

For convenient operation, Holo series provides a quick-disassembled rail clamp for installation on hunting weapons that equipped with Picatinny rails. Beyond that, there is a short Picatinny rail on the side for variety widely usage, so as to install additional equipment.

Short Start-Up Time

3s

3 seconds start-up time helps to save energy and can be rapidly activated when the right time comes.

Low Power Consumption

< 0.8w

Low power consumption guarantees you don't have to worry about the power supply.

Sight or Monocular, whichever you choose

In addition to be used as a thermal imaging sight on firearms, the Holo series can also be matched with other devices for searching.



IP67 Fully Waterproof

IP67 waterproof-rated protection ensures the Holo Series performs perfectly in humid environment, heavy rain, snowfall and submersion in 1 meter of water for up to 30 minutes.

